



Non-rechargeable Conformal Battery



Lithium/CF_x-MnO₂ Hybrid Battery

Flexible battery is conformable to many surfaces while providing high energy storage in a lightweight package

Features and Benefits

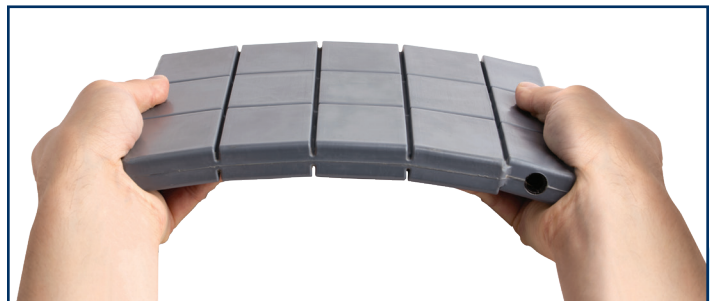
- High energy storage in ergonomic format
- Thin, flexible form factor matches soldiers' body contour and improves mobility and agility
- Five-level state of charge indicator
- System management bus (SMBus) interface capability
- Complete discharge device (CDD)
- Built around EaglePicher's soft-case cells
- In addition to SMBus, safety features include non-resettable and resettable thermal devices, and current fuses
- Robust and durable design passed live fire bullet penetration tests, impact test, immersion test and transit drop test
- Domestically produced

Applications

- Portable power: command, control, communications, computers, surveillance, intelligence and reconnaissance (C4SIR)

Specifications

Part Number	MAP-9553
Weight	940 g (2.07 lbs)
Dimensions	Width: 194.6 mm (7.65 in. +/- 0.05 in.)
	Thickness: 17.8 mm (0.70 in. Max)
	Length: 221.0 mm (8.66 in. +/- 0.05 in.)
Nominal Voltage	15V
Voltage Range	9.6 to 18.3V
Capacity	16Ah (20 W at 25°C (77°F))
Energy	250 Wh (20 W at 25°C (77°F))
Energy Density	266 Wh/kg (20 W at 25°C (77°F))
Maximum Continuous Current	5A
Operating Temperature	-20 to +60°C (-4 to 140°F)
Transportation	Class 9 UN 3090



Non-rechargeable Conformal Battery

