

3.0 V Primary D Cell



Reliable, lightweight cell with wide operating temperature range

Non-rechargeable Li/CFx-MnO₂ Hybrid

Features and Benefits

- Double the capacity of Li-SO₂D cells
- 1.4 times the capacity of Li-MnO₂ D cells
- Wide operating temperature range
- Optimized electrolyte
- Fully-welded, hermetically-sealed construction
- High temperature and corrosion proof TA-23 glass-to-metal seal
- Pressure release vent, shutdown separator, and fused (PTC) for safety
- Negative case polarity
- Long-shelf life

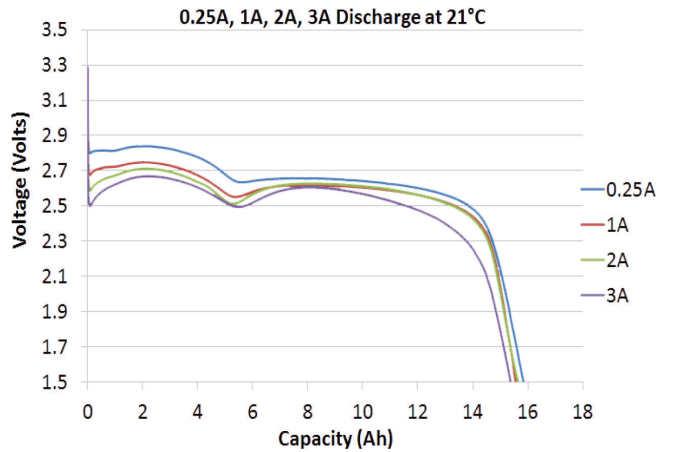
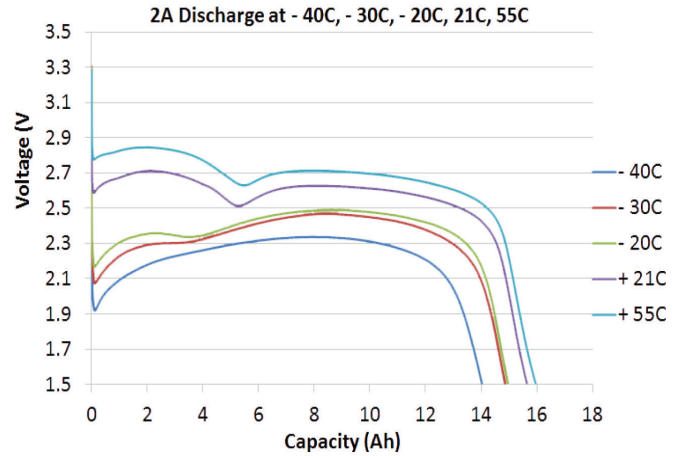
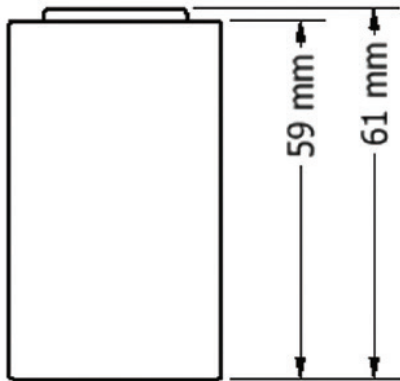
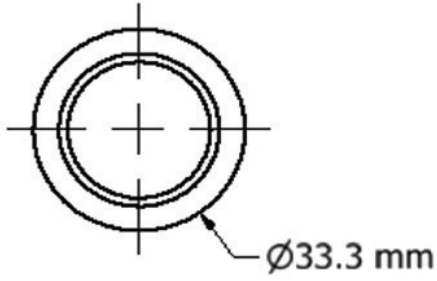
Applications

- Unattended ground sensors
- Oil and gas monitoring and metering
- Emergency lighting
- Personnel/border sensors
- Emergency communications
- Survival and emergency equipment
- GPS/mobile assist devices
- Alarming devices
- Automatic meter reading

Specifications	
Part Number	LCF-143
Weight	101 g (3.6 oz)
Height	61 mm (2.4 in.)
Diameter	33.3 mm (1.31 in.)
Nominal Voltage	2.5 V*
Voltage Range	1.5-3.4 V (2.0 V recommended cut-off)
Capacity	16 Ah*
Specific Energy	396 Wh/kg
Energy Density	753 Wh/L
Maximum Continuous Current	3.0 A** To avoid overheating. Higher currents possible
Maximum Pulse Current	6.0 A**
Operating Temperature	-40 to +60°C (-40 to 140°F)
Storage Temperature	-40° to +71°C (-40 to 160°F)
Exterior	Nickel-plated steel container with heat sleeve
Terminals/Connector	Based upon customer preference
Transportation	Class 9 ID number UN 3090***
<small>* At 25°C, 2.0 amp load to 2.0 volts ** Maximum current can vary according to pulse characteristics, temperature and cell history *** For complete transportation regulations, contact EaglePicher Technologies</small>	

Concept Design - Product Under Development

3.0 V Primary D Cell



Concept Design - Product Under Development