

3.0 V Primary D Cell



Non-rechargeable Li/CFx-MnO₂ Hybrid

Reliable, lightweight cell with wide operating temperature range

Features and Benefits

- Double the capacity of Li-SO₂D cells
- 1.4 times the capacity of Li-MnO₂ D cells
- Wide operating temperature range
- Optimized electrolyte
- Fully-welded, hermetically-sealed construction
- High temperature and corrosion proof TA-23 glass-to-metal seal
- Pressure release vent, shutdown separator, and fused (PTC) for safety
- Negative case polarity
- Long-shelf life

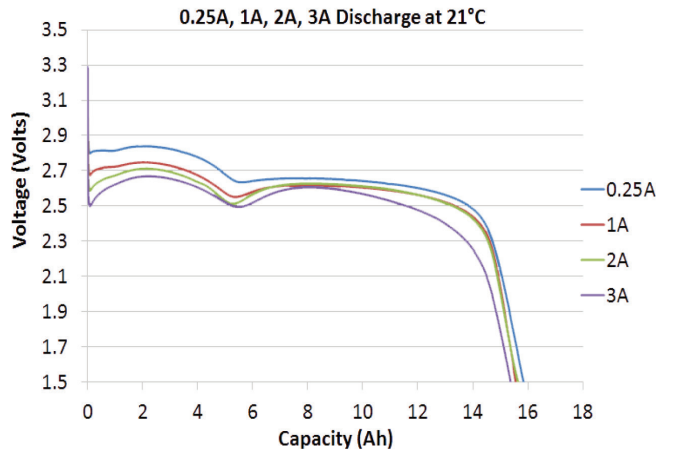
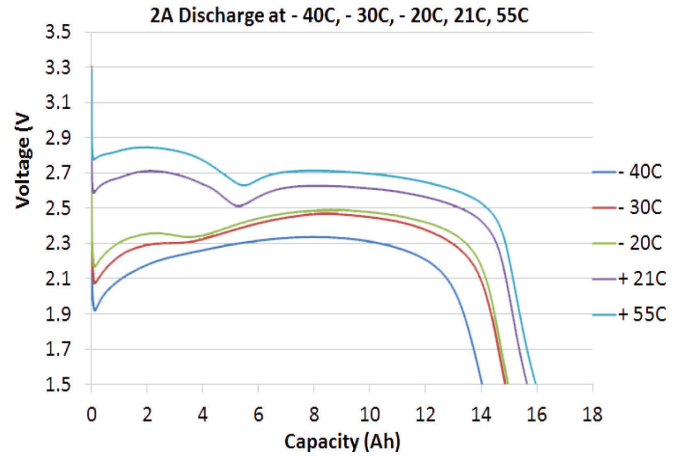
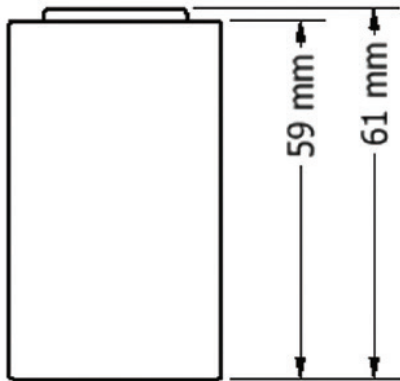
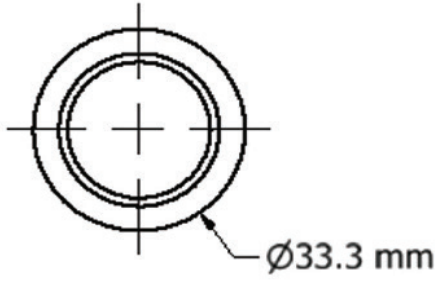
Applications

- Unattended ground sensors
- Oil and gas monitoring and metering
- Emergency lighting
- Personnel/border sensors
- Emergency communications
- Survival and emergency equipment
- GPS/mobile assist devices
- Alarming devices
- Automatic meter reading

| Specifications | |
|--|---|
| Part Number | LCF-143 |
| Weight | 101 g (3.6 oz) |
| Height | 61 mm (2.4 in.) |
| Diameter | 33.3 mm (1.31 in.) |
| Nominal Voltage | 2.5 V ¹ |
| Voltage Range | 1.5-3.4 V (2.0 V recommended cut-off) |
| Capacity | 16 Ah ¹ |
| Specific Energy | 396 Wh/kg |
| Energy Density | 753 Wh/L |
| Maximum Continuous Current | 3.0 A ² <small>To avoid overheating. Higher currents possible</small> |
| Maximum Pulse Current | 6.0 A ² |
| Operating Temperature | -40 to +60°C (-40 to 140°F) |
| Storage Temperature | -40° to +71°C (-40 to 160°F) |
| Exterior | Nickel-plated steel container with heat sleeve |
| Terminals/Connector | Based upon customer preference |
| Transportation | Class 9 ID number UN 3090 ³ |
| <small>¹ At 25°C, 2.0 amp load to 2.0 volts ² Maximum current can vary according to pulse characteristics, temperature and cell history ³ For complete transportation regulations, contact EaglePicher Technologies</small> | |

Concept Design - Product Under Development

3.0 V Primary D Cell



Concept Design - Product Under Development