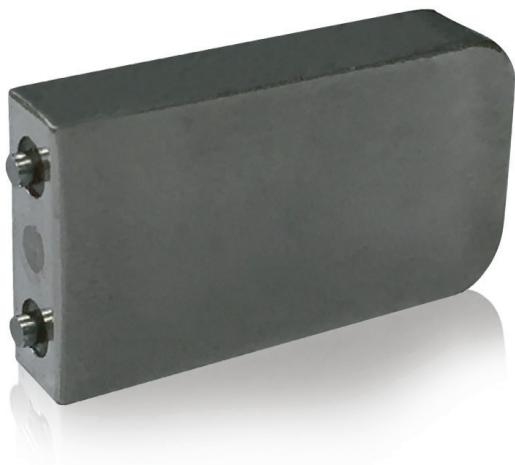


Contego® 60 mAh Battery



**Implantable grade
lightweight, high
energy density cell with
superior rate capability
and excellent cycle life**

Lithium-Ion Battery

Features and Benefits

- Long cycle life
- ISO 13485 certified
- Excellent rate capability
- Fully welded hermetically sealed design
- Thermal shutdown separator
- Long shelf life
- Lightweight titanium case
- Case neutral design

Applications

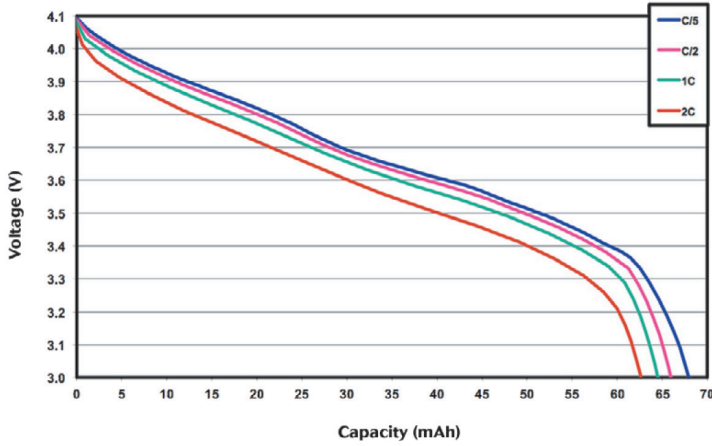
- Neuromodulators
- Cochlear implants
- Sleep apnea

Specifications

Part Number	D-00040-1
Weight	3.0 g
Dimensions	See details on back
Nominal Voltage	3.6 V
Voltage Range	3.0 to 4.1 V
Capacity at C/5 and 20°C (68°F)	60 mAh at C/5 charge to 4.1V C/5 discharge to 3.0 V and 20°C (68°F) at beginning of life
Maximum Recommended Charging Rate	C/2
Cycle Life at 37°C (99°F)	>80% capacity after 1,000 cycles C/2 charge to 4.1V C/2 discharge to 3.0V
Volume	1.12 cc
Energy Density	220 Wh/L
Operating Temperature	37°C (99°F)
Recommended Storage Conditions	20±5°C (68±9°F)
Case Material	Titanium
Terminals	Molybdenum*
Transportation Safety	UN recommendations on the transportation of dangerous goods ST/SG/AC.10/11

Contego 60 mAh Battery

Contego 60 Discharge Rate Capability at 37°C



Contego 60 Cycle Life at 37°C and C/2

