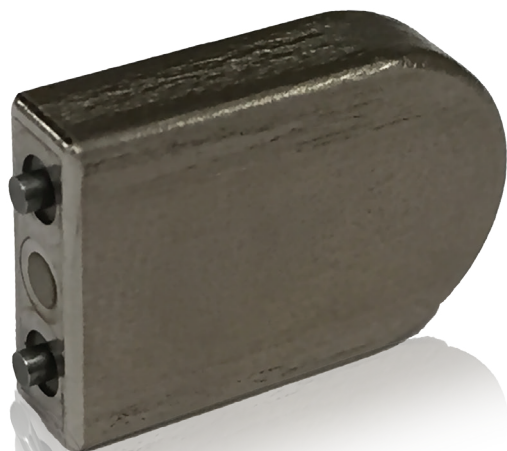


## Contego® 50 mAh Battery



Lithium-Ion Battery

### Features and Benefits

- Long cycle life
- ISO 13485 certified
- Fully welded hermetically sealed design
- Thermal shutdown separator
- Long shelf life
- Lightweight titanium case
- Case neutral design

### Applications

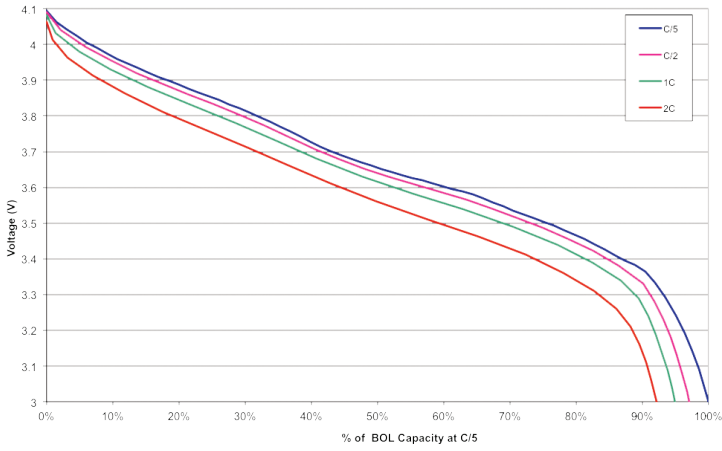
- Neuromodulators
- Cochlear implants
- Sleep apnea

**Implantable grade  
lightweight, high  
energy density cell with  
superior rate capability  
and excellent cycle life**

Specifications	
Part Number	D-00020
Weight	2.5 g
Dimensions	See details on back
Nominal Voltage	3.6V
Voltage Range	3.0 to 4.1V
Capacity at C/5 and 20°C (68°F)	50 mAh at C/5 charge to 4.1V C/5 discharge to 3.0V and 20°C (68°F) at beginning of life
Maximum Recommended Charging Rate	C/2
Cycle Life at 37°C (99°F)	>80% capacity after 1,000 cycles C/2 charge to 4.1V C/2 discharge to 3.0V
Volume	0.88 cc
Energy Density	228 Wh/L
Operating Temperature	37°C (99°F)
Recommended Storage Conditions	20±5°C (68±9°F)
Case Material	Titanium
Terminals	Molybdenum*
Transportation Safety	UN recommendations on the transportation of dangerous goods ST/SG/AC.10/11
Battery Safety	IEC 62133

# Contego 50 mAh Battery

Contego 50 Discharge Rate Capability at 37°C



Contego 50 Cycle Life at 37°C and C/2

